

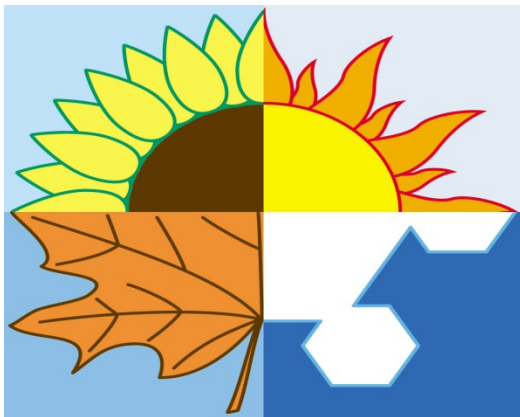
Let's talk about Sadie and the Snowman

By Allen Morgan



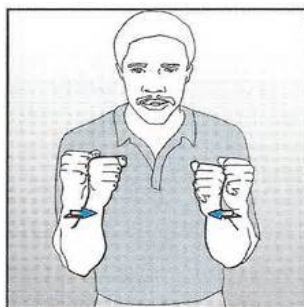
Sadie works hard to make a snowman—rolling the snowballs, dressing the snowman and adding the face. When the weather turns warmer she tries to save it. This story takes place over a whole year, the weather changes and the seasons change. You can look for clues in the pictures that tell you the seasons are changing. Sadie uses food to make the faces of her snowmen. Practice your ASL signs for the food items and the parts of the face. Who keeps eating the nose?

One of the principles for reading with your deaf child offered by the Le Clerc Centre's Shared Reading Project is, **"Re-read on a 'storytelling' to 'story reading' continuum."** The first time you read the book together *tell* your child the story by looking at the pictures and describing what it is that you see. Let your child guide you through the story. For very young children, this may mean letting them turn the pages before you are ready! As your child gets older you can actually read the story together.



Can you guess
which ASL sign is
for which season?

Which season is
missing?



Let's Be Together

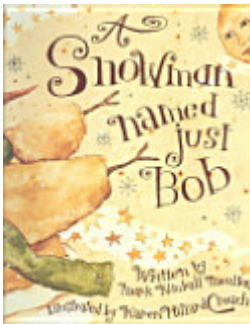
Make a snowman that you can eat!

Large marshmallows create the body of the snowman. Chocolate chips work well for the eyes, nose, mouth and buttons. Round candies are another option for the buttons. Attach two marshmallows together with a small amount of frosting. Attach the chocolate chips or candies with more frosting. Pretzel sticks pressed into the side of the snowman make good arms.

As you eat your snowman think about the story. Can you remember who ate the snowman's cookie eyes? Who ate the snowman's apple nose? Who ate the snowman's banana mouth? What other food items did Sadie use for the snowman's face? Who ate those?

Read More About It!

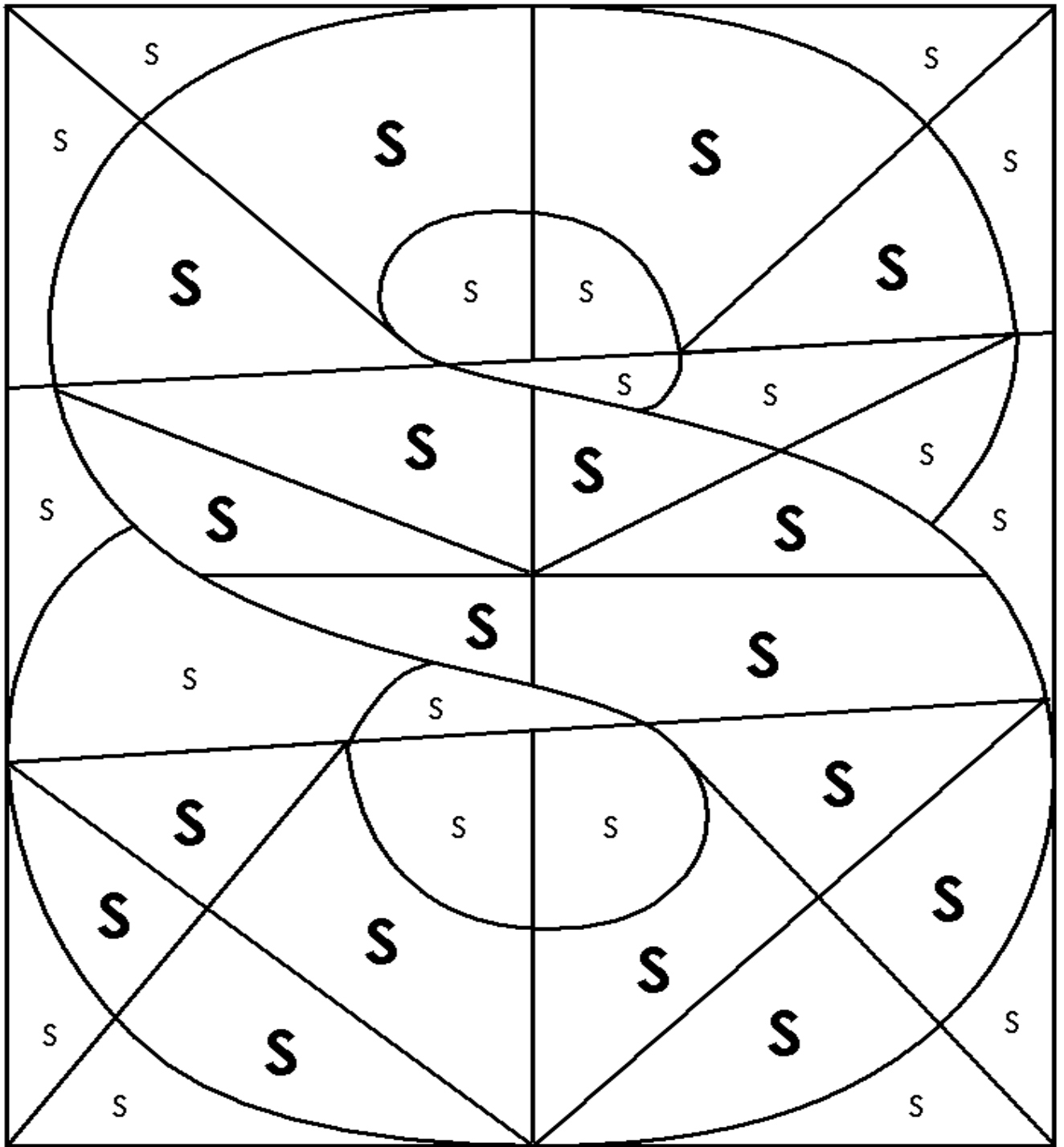
Here are some more books about Winter for you to enjoy!



Learning and Language

Name signs are an important aspect of Deaf culture. Where you sign the name sign on your body is as significant as the handshape used for the name sign itself. This activity encourages you and your child to play with name signs. Using your child's name sign, sign the name on different locations of your face/body. Together, use a friend's or family member's name sign or the name sign of a character from the story and sign it on different locations of your face/body. See if you can both do it at the same time moving from top to bottom (head to toes) or bottom to top (toes to head) OR mix all the locations up. The goal of this game is to get your child laughing at the silliness of the different locations for the name sign.

Let's Play Together



Color the capital **S**'s blue

Color the lower case **s**'s grey

"S" is for Sadie. Practice identifying the capital letter "S". Find the hidden letter by coloring according to the directions above.

